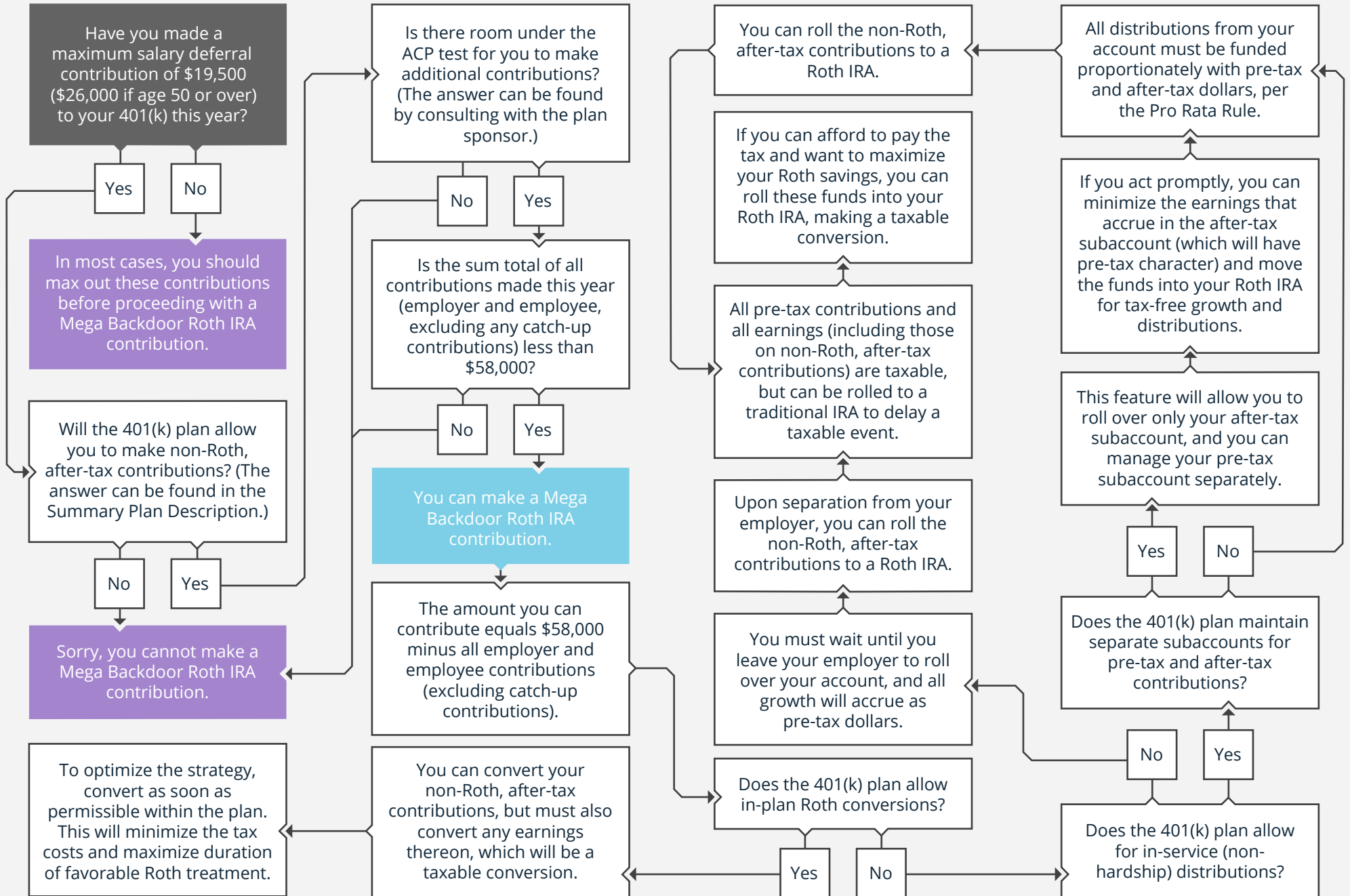




Start Here



Pearl Planning does not provide legal or tax advice. The information herein is general and educational in nature and should not be considered legal or tax advice. Tax laws and regulations are complex and subject to change, which can materially impact investment results. Pearl Planning cannot guarantee that the information herein is accurate, complete, or timely. Pearl Planning makes no warranties with regard to such information or results obtained by its use, and disclaims any liability arising out of your use of, or any tax position taken in reliance on, such information. Consult an attorney or tax professional regarding your specific situation.

Melissa Joy, Founder, Pearl Planning; Financial Planner, RJFS

8031 Main St., #302 Dexter, MI 48130
Melissa@pearlplan.com | 734-274-6744 | <http://pearlplan.com>